

PW Series

Ultrafiltration – Post treatment of RO and NF

The P-Series family of polyethersulfone ultrafiltration membrane elements are characterized by a 10,000 molecular weight cut-off and greater than 96% rejection of Cytochrome-C (13,300 MW protein). PW Elements are used for pretreatment of process water and post treatment of ultrapure water.

Table 1: Element Specification

Membrane	P-Series, Polyethersulfone		
Model	Active area ft ² (m ²)	Outer wrap	Part number
PW4025T	50 (4.6)	Tape	1207368
PW4040TM	85 (7.9)	Tape	3051014
PW4040FM	85 (7.9)	Fiberglass	3050051
PW8040F	350 (32.5)	Fiberglass	1207404

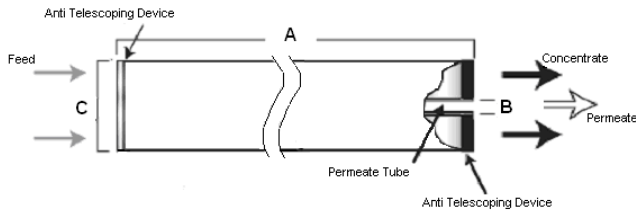


Figure 1: Element Dimensions Diagram – Female

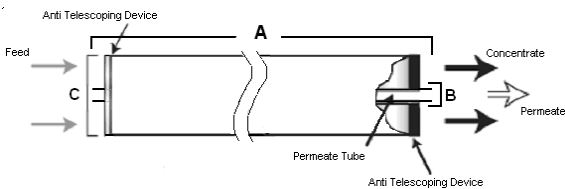


Figure 2: Element Dimensions Diagram – Male (4040)

a product of
ecomaginationSM



Table 2: Dimensions and Weight

Model ¹	Dimensions, inches (cm)			Boxed Weight lbs (kg)
	A	B ²	C ³	
PW4025T	25.0 (63.5)	0.625 (1.59)	3.9 (9.9)	5 (2.3)
PW4040TM	40.0 (101.6)	0.75 (1.90) OD	3.9 (9.9)	8 (3.5)
PW4040FM	40.0 (101.6)	0.75 (1.90) OD	3.9 (9.9)	8 (3.5)
PW8040F	40.0 (101.6)	1.125 (2.86)	7.9 (20.1)	32 (14.5)

¹ These elements are bagged dry before shipping.

² Internal diameter unless specified OD (outside diameter).

³ The element diameter (dimension C) is designed for optimum performance in GE pressure vessels. Other pressure vessel dimension and tolerance may result in excessive bypass and loss of capacity.

Table 4: Operating and CIP parameters

Typical Operating Pressure	80-135 psig (555 – 931 kPa)
Typical Operating Flux	10-25GFD (15-40LMH)
Maximum Operating Pressure	200 psig (1,379 kPa)
Maximum Temperature	Continuous operation: 122°F (50°C) Clean In Place (CIP): 122°F (50°C)
pH Range	Continuous operation: 4.0-11.0, Clean In Place (CIP): 2.0-11.5
Maximum Pressure Drop	Over an element: 12 psig (83 kPa) Per housing: 50 psig (345 kPa)
Chlorine Tolerance	5,000+ ppm-days

Find a contact near you by visiting www.ge.com/water and clicking on "Contact Us".

* Trademark of General Electric Company; may be registered in one or more countries.

©2010, General Electric Company. All rights reserved.